



RED OAK, TEXAS

TRANSPORTATION NETWORK

SECTION 2 - TRANSPORTATION NETWORK

- INTERSTATE AVAILABILITY: TEXAS INTERSTATE HIGHWAYS (MAP)
- AIR TRAVEL: NORTH AMERICAN COUNTRIES (MAP)
- TEXAS RAILWAY MAP (BNSF & UP ROUTES)

INTERSTATE AVAILABILITY



INTERSTATE 35: 2 MINUTES

✓ I-35E:
1.4 MILES / 2 MINUTES

✓ I-20:
8 MILES / 10 MINUTES

✓ I-45:
9 MILES / 15 MINUTES

✓ I-30:
28 MILES / 24 MINUTES

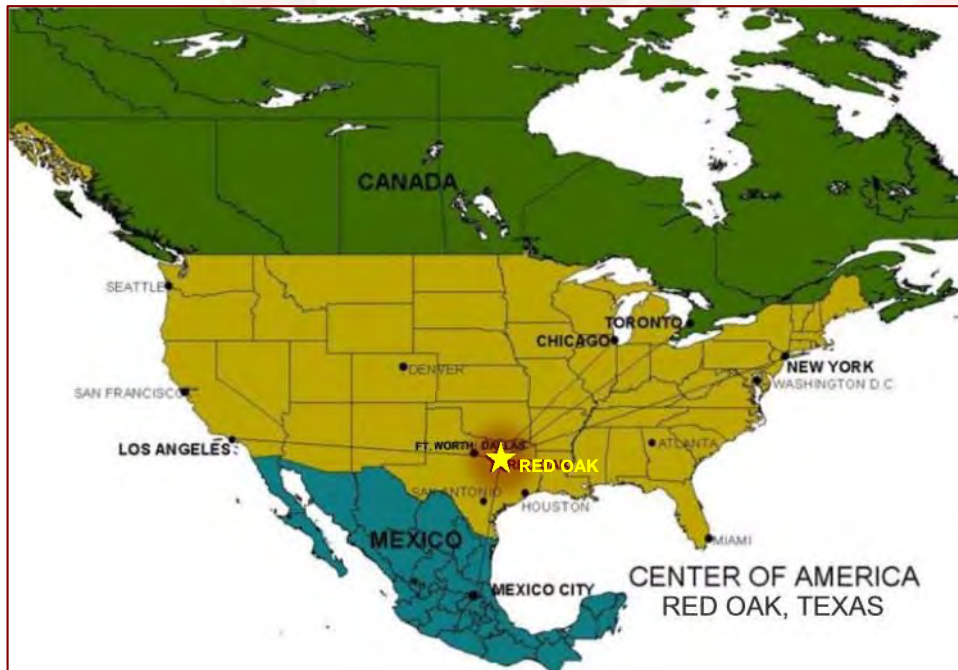
✓ I-35W:
43 MILES / 43 MINUTES

✓ I-10:
228 MILES / 3+ HOURS

✓ I-110:
642 MILES / 9 HOURS

7 INTERSTATE HIGHWAYS WITHIN 9 HOURS!

AIR TRAVEL WORLDWIDE ACCESSIBILITY



**4 HOURS TO EAST & WEST COASTS:
50 MILLION PEOPLE & 70+ MAJOR MARKETS
WITHIN 24 HOURS**

191 WORLDWIDE DESTINATIONS

- **D/FW AIRPORT • 38 MILES / 39 MINS.**
 - 191 DESTINATIONS WORLDWIDE
 - 55 GATES
 - 20 PASSENGER AIRLINES
 - 7 RUNWAYS
- **WORLD RANKINGS:**
 - 4TH - OPERATIONS
 - 8TH - PASSENGERS
- **DALLAS LOVE • 24 MILES / 26 MINS.**
 - 10 MAJOR US DESTINATIONS
 - 19 GATES
 - 2 TERMINALS
 - 4 PASSENGER AIRLINES
 - 8 MILLION PASSENGERS PER YEAR

TEXAS RAILWAY MAP

BNSF & UP ROUTES



TEXAS RAILWAY
MAP

BNSF & UP ROUTES

— UNION PACIFIC

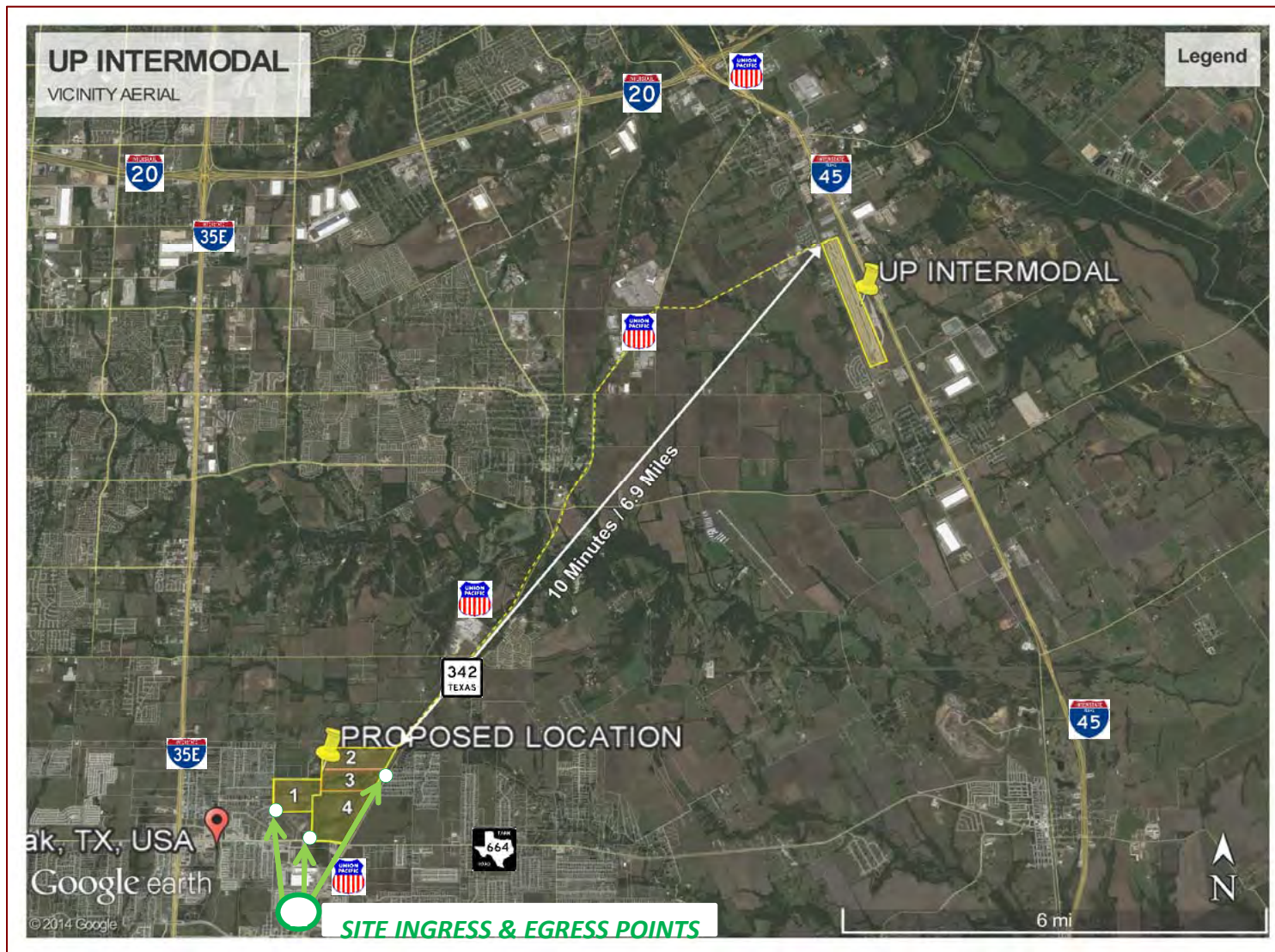
— BNSF

(SOURCE: TEXAS ECONOMIC DEVELOPMENT. OFFICE OF THE GOVERNOR, STATE OF TEXAS)

RO
RED OAK, TEXAS

TRANSPORTATION INFRASTRUCTURE

SITE INGRESS & EGRESS, INTERSTATE ROUTES, RAIL



- I-35E: 1.5 MILES
- I-20: 8.0 MILES
- FM 664: ADJACENT
- SH 342: ADJACENT
- BNSF/UP RAIL: AVAILABLE ONSITE
- UP INTERMODAL: 6.9 MILES (NE)
- US 287: 10.4 MILES

