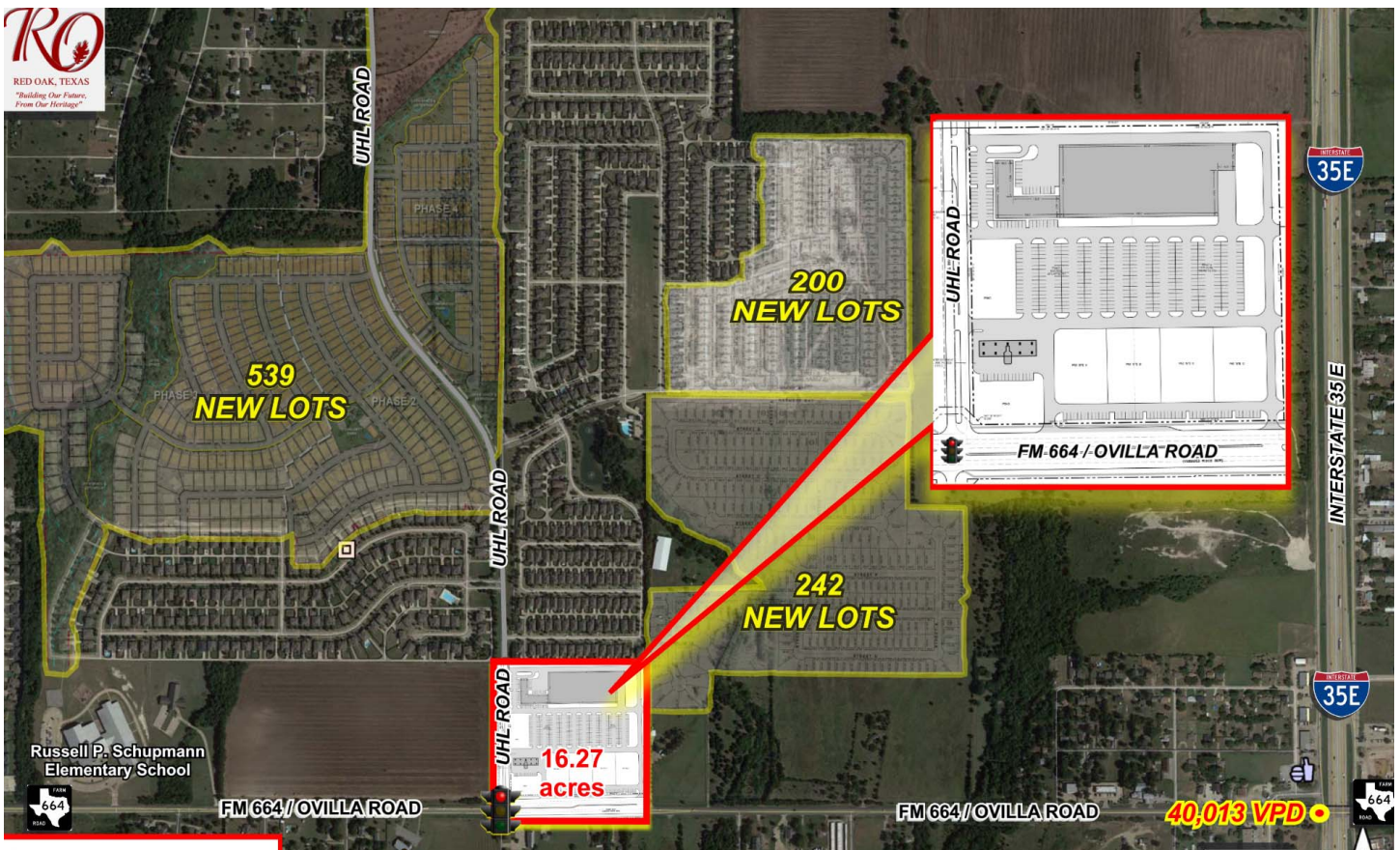


# 2

## NEC W. OVILLA ROAD & UHL ROAD



### CONTACT

Inland Development Co.

Tom DeCicco  
 Mobile: 972.467.6960  
 tom.decicco@gmail.com

### Demographics

	1 Mile	3 Miles	5 Miles	Red Oak PTA
2019 Population	3,480	31,256	85,006	195,696
2024 Population	3,666	34,420	94,025	215,544
2019 Households	1,103	10,341	28,503	67,141
Persons Per HH	3.0	3.0	3.0	2.9
Average Age	35.2	35.6	36.8	36.5
Median HH Income	\$90,744	\$70,047	\$75,172	\$67,786
Average HH Income	\$103,965	\$81,192	\$87,878	\$80,065
% White	47.9%	40.0%	37.7%	39.8%
% Black	25.4%	34.0%	41.2%	38.3%
% Hispanic	23.8%	23.2%	18.3%	19.3%
Daytime Population	9,617 (City Limits)			47,247