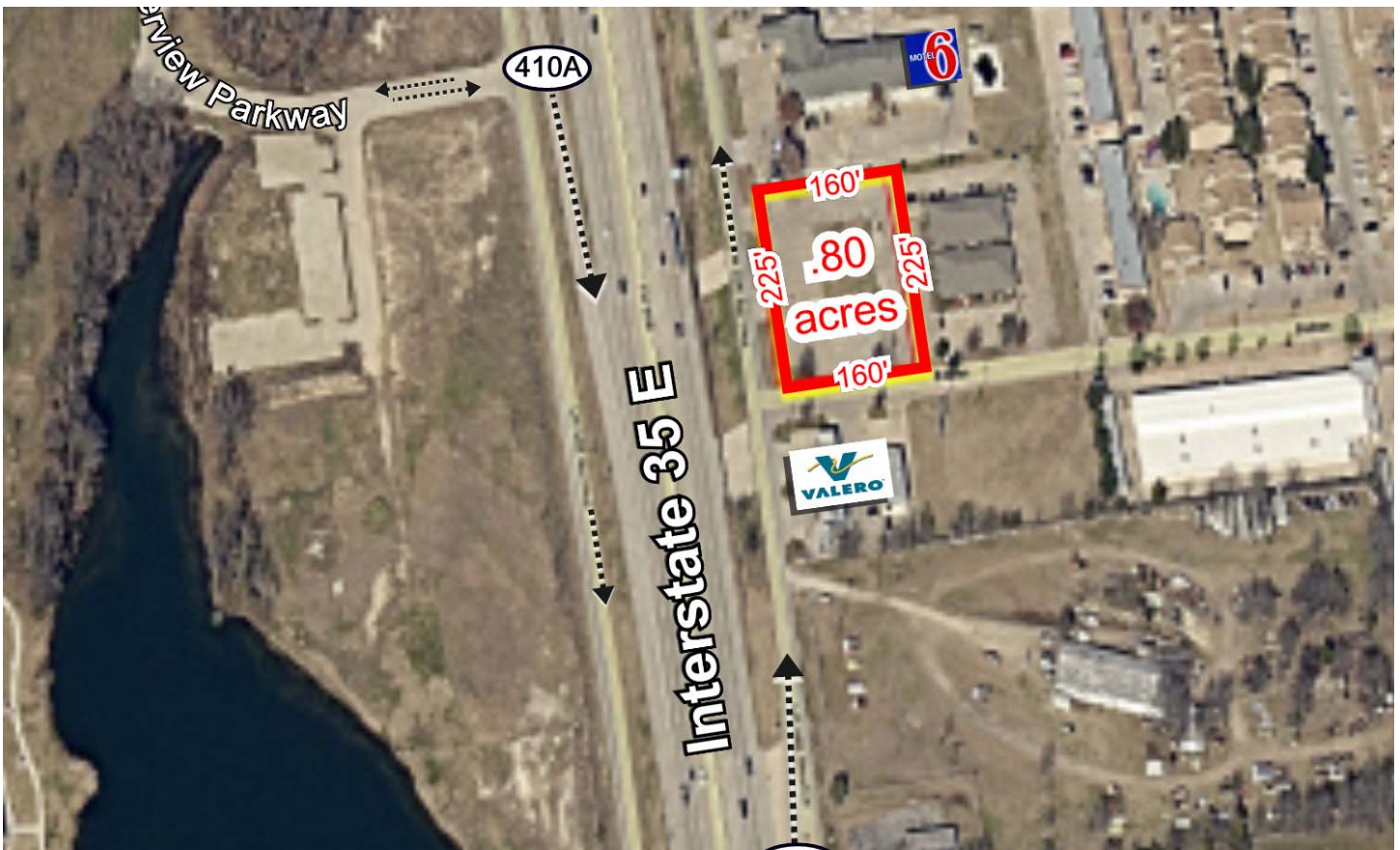


5 S. I-35 PROPERTIES (EAST SIDE)



CONTACT

City of Red Oak
 Lee McCleary, CEcD
 Economic Development
 Director
 (972) 617-6831 – office
 (972) 935-3187 - cell
 lmcclary@redoaktx.org

Demographics

	1 Mile	3 Miles	5 Miles	Red Oak PTA
2019 Population	3,979	25,174	63,319	195,696
2024 Population	4,205	27,350	69,683	215,544
2019 Households	1,416	8,371	21,175	67,141
Persons Per HH	2.9	3.0	3.0	2.9
Average Age	36.1	36.6	36.8	36.5
Median HH Income	\$69,842	\$77,514	\$75,065	\$67,786
Average HH Income	\$81,293	\$88,736	\$89,221	\$80,065
% White	60.4%	54.4%	48.5%	39.8%
% Black	18.3%	20.3%	27.3%	38.3%
% Hispanic	18.6%	22.2%	21.3%	19.3%
Daytime Population	9,617 (City Limits)			47,247